





# GROUND TO GRAPE TO GLASS



Vinescapes is the leading vineyard and winery consultancy providing operational and strategic expertise to grape growers and wine producers, as well as world class viticulture - climate research, winery design and winemaking consultancy services.

Working together is what we love, so we build close partnerships and provide first rate customer service. Your success is our success.

---

## **SITE EVALUATION:**

using our unique state-of-the art viticulture assessment tool, VineMAP, and decades of experience

## **VINEYARD ESTABLISHMENT:**

science-led selection of the best varieties, clones and rootstocks to create your vineyard

## **PRECISION VINEYARD MANAGEMENT:**

expertise, timing and data are key to crop success

## **WINERY DESIGN:**

more than just a winemaking site, a winery showcases your brand and is your wine production home

## **CONSULTANCY, RESEARCH AND TRAINING:**

to support you every step of the way



# CREATING VINEYARDS

---

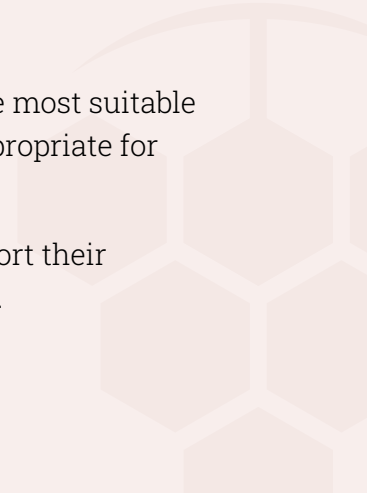
## SITE EVALUATION

The right site is key to the success of a vineyard - and will help you avoid costly mistakes. We use our state-of-the-art scientific mapping tool, VineMAP, as well as very detailed 'boots on the ground' evaluation of all the essential factors for viticulture.

## VINEYARD ESTABLISHMENT

Our team will design and create your vineyard, with their knowledge of the most suitable vine varieties, clones, rootstocks, layout, trellis and training systems appropriate for the site, production and wine styles.

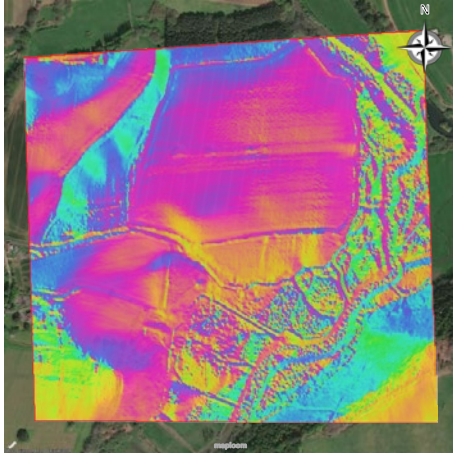
All our clients are assigned an experienced Project Manager to support their vineyard project on its journey from ground to grape to glass.



Aspect map

Resolution: 2m  
Data source: LIDAR Digital Terrain Model

0 m 400 m



© Environment Agency copyright and/or database right 2019. All rights reserved. © HERE, 2019

Aspect suitability for English and Welsh vineyards is southerly, between 90° – 270° (East – West).

For specialist advice on land with other aspects please contact the Vinescapes.

\*higher scores can be awarded if the land is not exposed to prevailing south-westerly winds.

Aspect range: 0.0-360.0 degrees

Aspect (°)	Score	Area (ha)	Aspect (degrees)
< 90	0/20	18.3	0
90-125	15/20	6.1	90
125-180	20/20	6.9	135
180-225	10/20*	3.6	180
225-270	5/20*	5.4	225
> 270	0/20	24.5	270
			360

Suitable area: 22.0 ha

Area average aspect suitability score: 4.5/20

Site Overview – Pulborough, England, United Kingdom



© HERE, 2019

Results summary

Variable	Suitability score	Suitable area (ha)
<b>Topography</b>		
Elevation	2.2/20	9.2
Aspect	11.7/20	45.8
Slope	4.5/20	22.0
	12.4/20	51.6
<b>Soil</b>	Undetermined	Undetermined
<b>Landcover</b>		
Protected status	-	-
<b>Suitable vineyard area</b>		

# VINEMAP

VineMAP is a unique, objective, science-based modelling tool that grades land and quickly allows land owners, land agents, farmers, investors, existing and new vineyards to know if their land is suitable for a vineyard. The reports include topography, climatic data, soil suitability, and frost-risk analysis.

This simple online tool is only available on the Vinescapes website.

---

**“With the accessibility of VineMAP in terms of cost and functionality I would be professionally obliged to use this tool for evaluating client vineyard sites.”**

**PETER HAYES**

GLOBAL WINE INDUSTRY STRATEGIST & ADVISOR







# VINEYARD MANAGEMENT

---

All vineyard tasks require data driven decisions to be made at key stages throughout the year. We use the latest technologies and methods, with our skills and experience to bring our clients' vineyards to their full potential and deliver the highest quality crop.

Outsourcing vineyard management to Vinescapes provides access to world class expertise and resources as well as labour and financial efficiency savings.





# CREATING WINERIES & WINE

---

Exceptional winery design is critical to high quality wine production and is a reflection of your brand.

## WINERY SCOPING

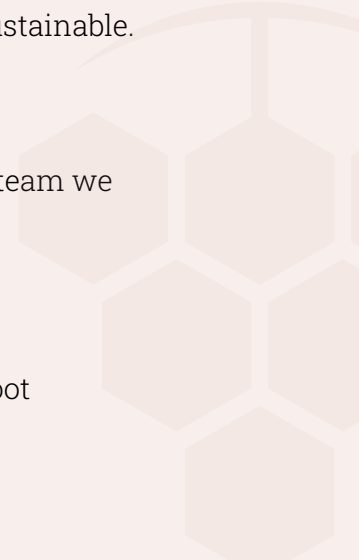
We provide the technical winery specifications for production logistics, equipment, storage and tasting rooms, to ensure your winery is fit for purpose and sustainable.

## ARCHITECTURE & DESIGN

Working with the best winery architects and our own in-house design team we deliver stunning efficient and sustainable wineries.

## WINEMAKING CONSULTANCY

To advise on wine styles, winemaking strategy and to trouble shoot oenological challenges.





# CONSULTANCY & TRAINING

Every season is different and presents its own challenges – so the Vinescapes team of experts offer a flexible approach to consultancy, mentoring and training support, to both prospective and experienced grape growers and wine producers.

---

- **CONSULTANCY:** Whether it's client specific support with viticulture challenges, agronomy, frost risk assessments, winemaking or business strategy.
- **VINEPRO:** As alternative to classroom based courses, VinePRO is a bespoke mentoring and training service tailored to clients' individual needs and delivered in their own vineyards, how and when they need it.
- **MASTERCLASSES:** International experts with in-depth knowledge presenting the latest in techniques and technology in viticulture and oenology.
- **WORKSHOPS:** Led by experienced trainers and designed for those keen to develop their practical skills in grape growing and winemaking.



# RESEARCH




---

Research and science are fundamental to our approach. We are thought leaders and work internationally, collaborating with research bodies and universities to provide world-class sector research, viticulture climate science, strategic and operational expertise to grape growers and wine producers. Our staff are highly trained and engage with research on a day-to-day basis to support decision making.

We also lead on professional research and science projects and some of our work can be found published in leading scientific journals, which can be accessed via our website.

Dr Alistair Nesbitt, Vinescapes CEO, also leads the UK's national body, Wines of Great Britain (WineGB), Research & Development committee and lectures widely on matters of climate change and viticulture.



VINESCAPES



CELEBRATING OUR  
CLIENTS' SUCCESS!



Supporting your wine production adventure • [www.vinescapes.com](http://www.vinescapes.com)



**Tel:** +44 (0) 7939 900203 • **Email:** [info@vinescapes.com](mailto:info@vinescapes.com)